



cimplifi™

Multi-platform integration made easier.  
The best technologies made better.  
A more empowered experience made possible.

**Cimplifi™ puts it all within reach.**

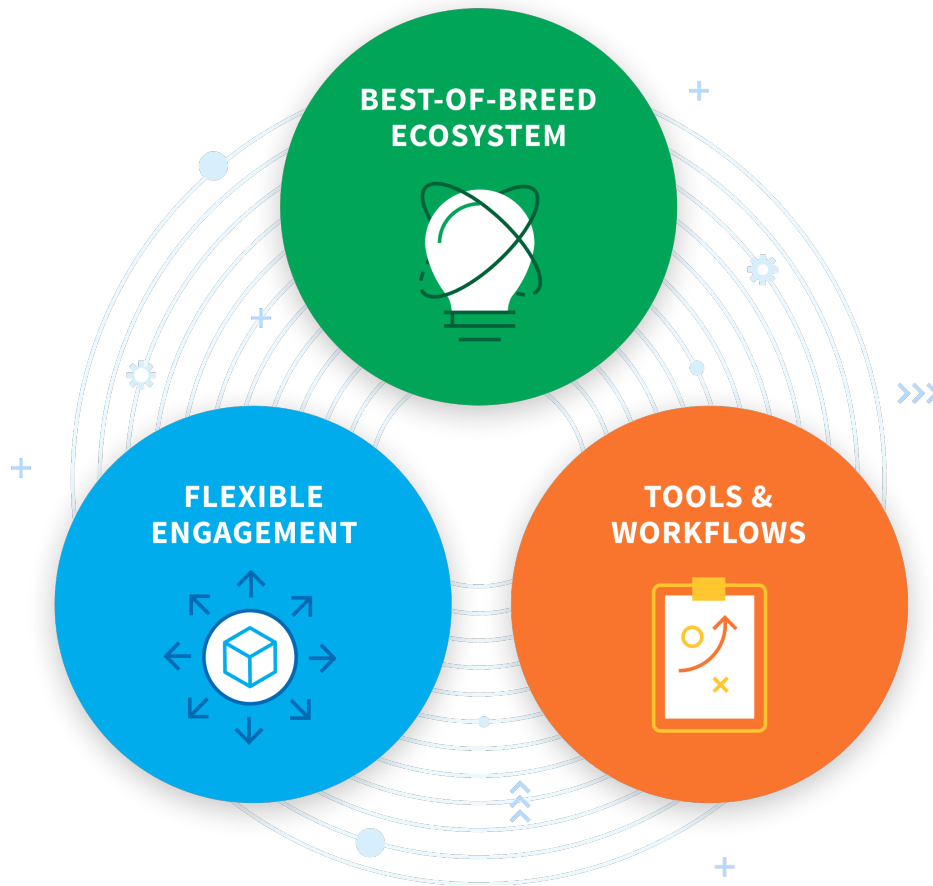


# Your world is complex. We make it simpler.

Cimplifi™ makes it easy to harness the technologies and services that power eDiscovery and contract analytics.

Our client-centric experience and ecosystem offers a comprehensive portfolio of technology-enabled Cimplifi Legal Solutions™—integrating proprietary tools and automated workflows with market-leading software to deliver greater visibility and control in an easy-to-use, end-to-end system.

Streamline processes, unify reporting, and empower clients and users with more control, choice, and ease.




---

### **INFRASTRUCTURE-FREE**

With no investment, licensing, or maintenance required, you can scale and customize your tech stack without limits.

---

### **FLEXIBLE, EXPERT SUPPORT**

Engage with us on your terms: self-service, full-service, and seamless service on demand.

---

### **CURATED TECHNOLOGIES**

Access an expansive ecosystem with a curated suite of the most powerful industry tools.

---

### **TRANSPARENCY AND VISIBILITY**

Real-time metrics and actionable intelligence deliver information and insight across teams, tools, contracts, and cases.

---

### **SIMPLIFIED, AUTOMATED WORKFLOWS**

Proprietary tools streamline and integrate administration, processes, and reporting—across users, tools, and projects.

---

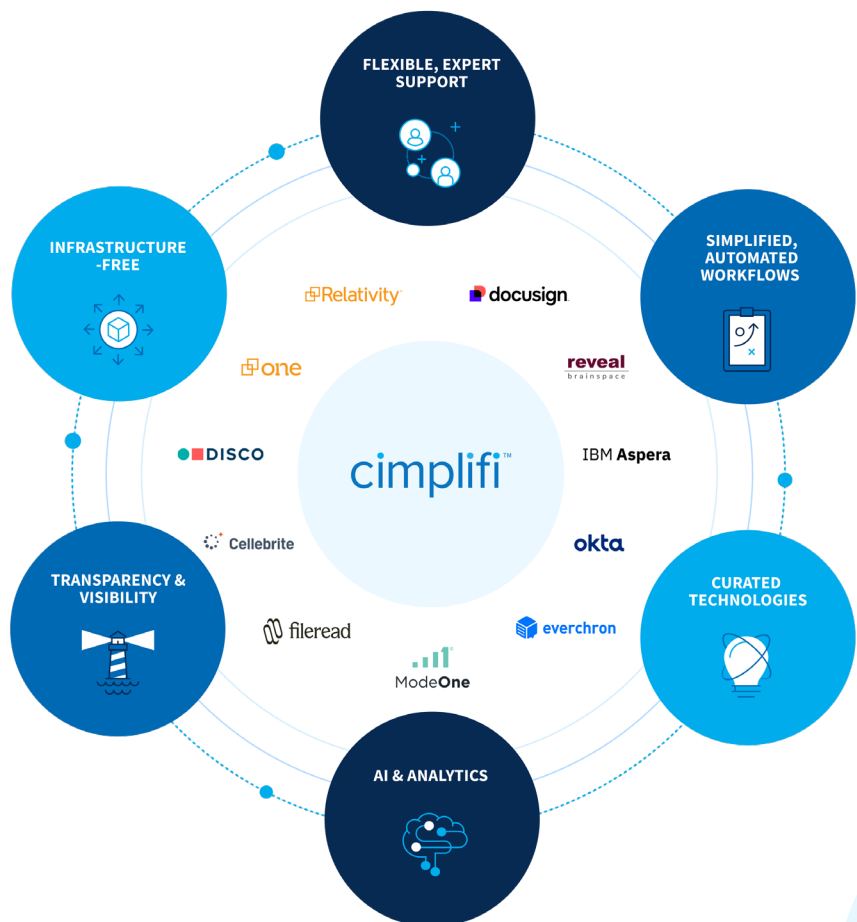
### **ANALYTICS & AI**

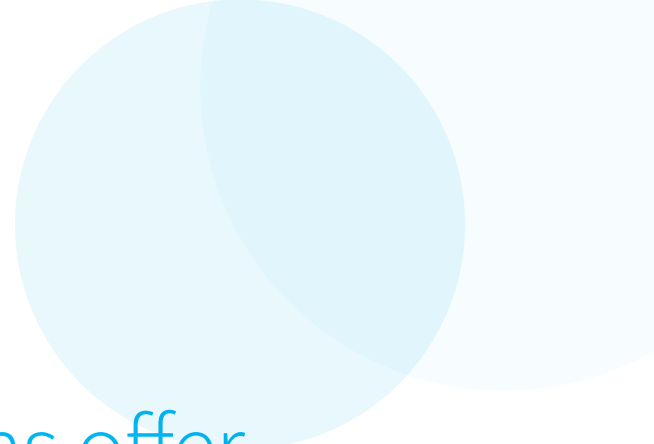
Advanced analytics, proprietary workflows, and proven expertise converge to distill complexity and drive precision.

## A curated platform without tethers.

Get access to a secure ecosystem of the most powerful eDiscovery and contract analytics tools, free from the burden of infrastructure or licensing. No investment, commitment, or constraints. More freedom, choice, and possibility.

- Choose from a tailored portfolio of industry-leading software
- Flexibility to support any tech stack
- Eliminate infrastructure and licensing costs
- No back-end implementation, maintenance, or management required
- Customize and configure your environment with ease
- Deploy for your entire operation or utilize for a single matter
- Scale up or down without limits
- Get a custom platform without the cost and hassle of custom development





# Client-driven innovations offer integration with intelligence.

We make the best technologies work better through our Cimplifi Innovations (CI) suite of proprietary tools and automated workflows that integrate and streamline administration, processes, and reporting—across apps and across cases.

Developed with client input and designed to solve your workflow challenges, our suite of CI tools delivers a seamless, user-friendly experience, valuable insights, and benefits, all with less complexity and effort.



### **SIMPLIFIED ADMINISTRATION**

Our CI tools offer convenience through streamlined administration and expansive tool permissions. Automated workflows, SSO login, cross-tool user management, and custom enhancements make it easier and more efficient to manage your matters.



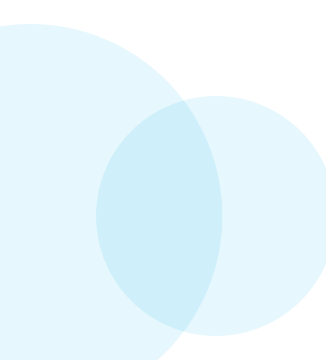
### **CROSS-TOOL, CROSS-MATTER INSIGHTS**

With PowerCI, we give you actionable intelligence into your data, cases, environment, and users with easy-to-understand visual reports and metrics to help you make more informed decisions and drive better outcomes.



### **TRANSPARENT, PREDICTABLE BILLING**

In this business, surprises are never a delight. Transparent and predictable pricing models and real-time metrics help you project, track, and recover costs across your matters and operations with confidence and clarity.





# With Cimplifi, you're more empowered to succeed.

We make it easy to manage your matters in house, but you're never on your own.

Customized onboarding and tailored playbooks, along with next-level training and education, ensure your team is equipped with the knowledge and skills to perform with confidence.

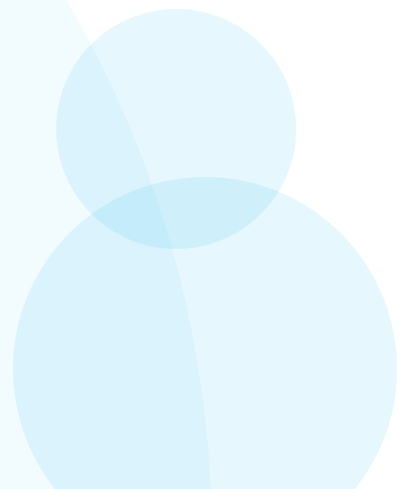
Our professional services team is an extension of your team, with certified expertise in all the leading tools and the ability to seamlessly step in and take on your most complex data and discovery challenges.

## **We've got your back with expert support.**

We empower admins and end users with customized onboarding and training programs; while our professional services team joins forces with yours to deliver project management, ingenuity, and expertise for an experience that is simply better.

- Customized and collaborative onboarding, implementation, and education
- Tailored playbooks, knowledge management tools, and next-level training opportunities
- Consultative approach brings in subject matter expertise, problem-solving skills, and advanced analytical capabilities
- Time-tested processes, workflows, and best practices to achieve the greatest efficiencies and better outcomes
- Transparent, insightful reporting, and detailed metrics
- Deep bench of legal, technical, and subject matter experts

Our clients love working with us because we're highly responsive, always reliable, and are relentless in our pursuit of creative solutions to the most complex challenges.



# Work the way that works best for you.

With tailored engagement models and alternative fee arrangements, Cimplifi makes it easier to work with us on your terms. There's no one way to work with us and many ways of doing business.

---

## FLEXIBLE, TAILORED SERVICE MODELS

Manage eDiscovery and contract management in-house with Cimplifi for a self-directed experience, with the ability to seamlessly bring on expert support as volume and complexity increase or resources get stretched. Or, turn to our team for a full-service, end-to-end managed solution.

---

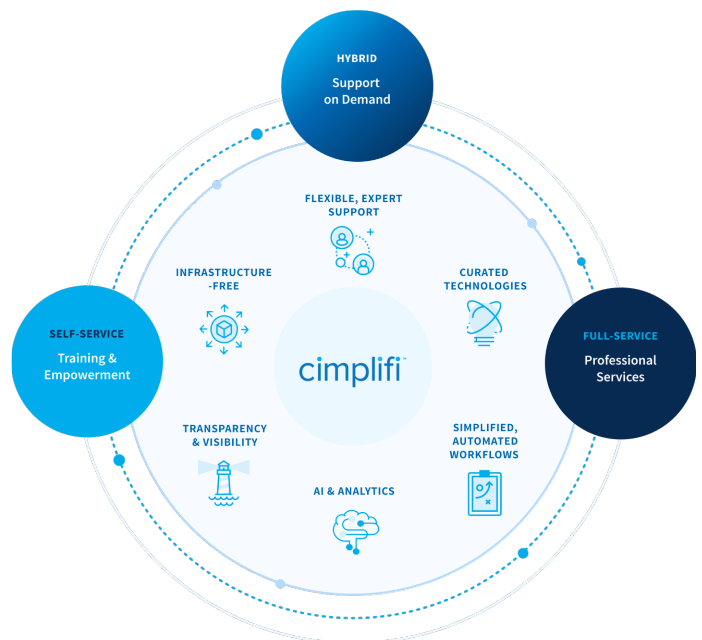
## TRANSPARENT, PREDICTABLE PRICING


Choose the simplified, predictable fee structure of a subscription model, pay as you go with all-inclusive pricing or combine the two for a hybrid billing solution. No matter which option you choose, you'll find more consistency and transparency for greater control, transparency, and cost management.

---

## SCALABLE, AGILE APPROACH

With no commitment or investment required, you can leverage as much or as little of our platform and services as needed and adjust as your needs change. We don't lock you into any one solution or approach, which means you're never stuck with a solution that doesn't work for you.





With Cimplifi, an easy, empowering experience is more within reach. Get in touch today to schedule a demo with an expert.

**INFO@CIMPLIFI.COM**

**PHONE 833.215.2667**

**cimplifi.com**

### **We're serious about security.**

The security of your data and safeguarding of your information is of paramount importance, and we are committed to the highest standards across our enterprise. We employ strict internal protocols, controls, and monitoring, and have been vetted by the most rigorous corporations and independent third-party auditors.

Cimplifi is among the few eDiscovery companies to achieve ISO 27001 status, as well as certification and compliance with GDPR, NIST 800-171, PCI DSS, HIPAA, and ITAR regulations. We maintain operations at only Tier IV or higher data centers with SOC audits, and mandate that cloud hosting partners maintain their own ISO and SOC status. Our security protocols reflect best practices and are always evolving to address new threats, regulatory changes, technology updates, and client requirements, for complete confidence and peace of mind.



**cimplifi™**